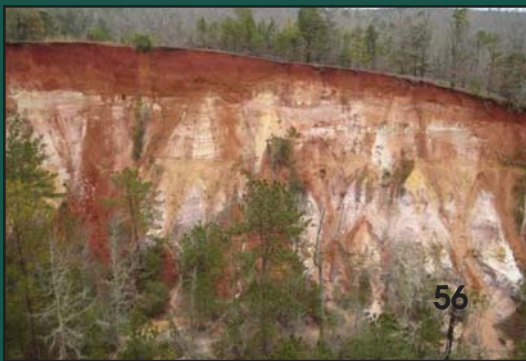


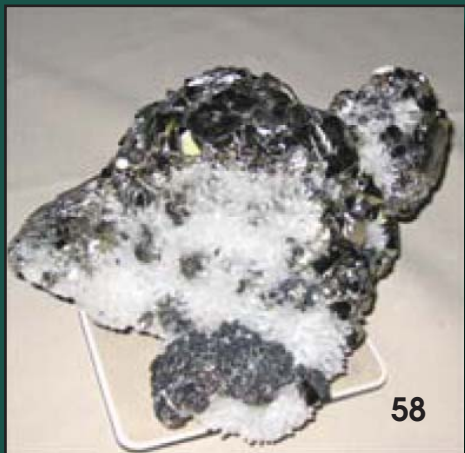
Inside This Issue



6



56



58

FEATURES

- The Marcellus Shale: Energy Development and Enhancement by Hydraulic Fracturing
AIPG Conference 3
- Eyewitness to the Haitian Earthquake of January 12, 2010
James K. Adamson, MEM-1532 4
- North American Geology in the 21st Century: Today and Tomorrow, Call for Abstracts
AIPG 47th Annual Meeting and AGWT 10th Florida ASR Conference 6
- Peer Reviewed Article:** Artificial Recharge in the Southwestern US: The Problem of Emerging Chemical Contaminants
Frank Butterworth, Kenneth Janecek, and Edward Wolfe 7
- Thank You for 25 Years 14
- AIPG Energy Statements (Part 1 of 2) 16
- Sunsetting the Global Climate Change Committee
John C. Lorenz, AAPG President 28
- Earthquake Swarm Continues in Yellowstone
News Release 42
- Uranium Mining Ore Reserve Estimation: Procedure and Pitfalls
George T. FitzGerald, Jr., CPG-06582 48
- Geoscience Currents
American Geological Institute 59

ON THE COVER -Upper Falls along Daniel Creek at Cloudland Canyon State Park in Rising Fawn, Georgia. Photo by Kelly B. Adams.

PRESIDENT -Michael D. Lawless, CPG
Draper Aden Associates
O: (540) 552-0444 / mlawless@daa.com

PRESIDENT-ELECT - Samuel Gowan, CPG
Alpha Geoscience, Inc.
O: (518) 348-6995
sgowan@alphageoscience.com

PAST-PRESIDENT - John L. Bognar, CPG
Leggette, Brashears & Graham, Inc.
O: (314) 845-0535 / jbognar@lbgstlmo.com

VICE PRESIDENT - Ronald J. Wallace CPG
State of Georgia
O: (404) 362-2589 / ronald_wallace@dnr.state.ga.us

SECRETARY - Adam W. Heft, CPG
Parsons Brinckerhoff
O: (517) 886-7400 / heft@pbworld.com

TREASURER - David R. Rhode, CPG
RBC Wealth Management
O: (303) 488-3645 /dave.rhode@rbc.com

EDITOR - Robert A. Stewart, CPG
Arcadis
O: (860) 533-9901 / bob.stewart@arcadis-us.com

ADVISORY BOARD REPRESENTATIVES
James D. Hirsch, MEM
Water and Air Research, Inc.
O: (352) 372-1500
jhirsch@waterandair.com

J. Matthew Justice, CPG
H: (937) 879-2186
matt.justice@sbcglobal.net

Barbara H. Murphy, CPG
Clear Creek Associates
O: (480) 659-7131
bmurphy@clearcreekassociates.com

J. Foster Sawyer, CPG
SD School of Mines and Technology
O: (605) 394-2462
foster.sawyer@sdsmt.edu

NATIONAL HEADQUARTERS
1400 W. 122nd Ave., Suite 250
Westminster, CO 80234
7:30 AM - 4:30 PM MDT; M-F
(303) 412-6205 • Fax (303) 253-9220
aipg@aipg.org • www.aipg.org

EXECUTIVE DIRECTOR - William J. Siok, CPG - wsiok@aipg.org
ASSISTANT DIRECTOR - Wendy J. Davidson - wjd@aipg.org
PROFESSIONAL SERVICES MGR - Cathy L. Duran - cld@aipg.org
MEMBERSHIP SERVICES MGR - Vickie L. Hill - vlh@aipg.org
OFFICE ASSISTANT - Cristie J. Valero - cjv@aipg.org
OFFICE CLERK - Emma M. Schlundt - ems@aipg.org

LIFE AND HEALTH INSURANCE
GeoCare Benefits Insurance Plan
Phone: 800-337-3140 or 805-566-9191
http://www.geocarebenefits.com/
E-mail: geocarebenefits@agia.com

AUTO AND HOME INSURANCE
Liberty Mutual
Phone: 800-524-9400
http://www.libertymutual.com/lm/aipg

SUPPLEMENTAL INSURANCE
AFLAC
Phone (303) 674-1808
http://www.aflac.com

PROFESSIONAL & GENERAL LIABILITY INSURANCE
The Wright Group
Phone (800) 322-9773 (303) 863-7788
http://www.thewrightgroupinc.com

ALAMO RENTAL CAR -
(800) 354-2322 - Member #BY-218167

AVIS RENTAL CAR -
(800) 222-2847 - Member AWD #L123443

BUDGET RENTAL CAR -
(800) 455-2848 - Member BCD #Z663100

AIPG FOUNDATION
Ray Talkington, CPG
Geosphere Environmental Management, Inc.
51 Portsmouth Avenue
Exeter, New Hampshire 03833
(603) 773-0075/FAX (603) 773-0077
RTALKINGTON@geospherenh.com

DEPARTMENTS

- 13 Editor's Corner
- 29 Members in the News
- 29 AIPG Student Application
- 30 Test Your Knowledge
- 31 President's Message
- 33 Executive Director's Column
- 34 Professional Ethics and Practices
- 36 Professional Liability and Risk Management
- 37 Hydrothink
- 38 Test Your Knowledge Answers
- 39 Student's Voice
- 40 Young Professionals
- 43 Letters to the Editor
- 43 In Memory
- 44 Professional Services Directory
- 45 AIPG Membership Application
- 47 New Applicants and Members
- 54 Section News
- 61 AIPG Store

American Institute of Professional Geologists (AIPG) is the only national organization that certifies the competence and ethical conduct of geological scientists in all branches of the science. It adheres to the principles of professional responsibility and public service, and is the ombudsman for the geological profession. It was founded in 1963 to promote the profession of geology and to provide certification for geologists to establish a standard of excellence for the profession. Since then, more than 10,000 individuals have demonstrated their commitment to the highest levels of competence and ethical conduct and been certified by AIPG.

The mission of the American Institute of Professional Geologists (AIPG) is to be an effective advocate for the profession of geology and to serve its members through activities and programs that support continuing professional development and promote high standards of ethical conduct.



The Professional Geologist (USPS 590-810 and ISSN 0279-0521) is published bi-monthly by the American Institute of Professional Geologists, 1400 W. 122nd Ave., Suite 250, Westminster, CO 80234-3499. Periodicals Postage Paid at Denver, Colorado and additional mailing offices.

POSTMASTER: Send address changes to *The Professional Geologist*, AIPG, 1400 W. 122nd Ave., Suite 250, Westminster, CO 80234.

Subscriptions for all Members and Adjuncts in good standing are included in annual membership dues. Subscription prices are \$20.00 a year for Members' additional subscriptions and \$30.00 a year for non-members for 6 issues (for postage outside of the U.S. add \$10.00). Single copy price is \$4.00 for Members and \$6.00 for non-members. Claims for nonreceipt or for damaged copies are honored for three months.

Entire contents copyright 2010 by *The Professional Geologist*. Original material may be reprinted with permission. Deadline for articles and advertisements is six weeks preceding publication. Advertising rates available upon request. Opinions and views expressed by the authors are their own and do not necessarily reflect those of the American Institute of Professional Geologists, its staff, or its advertisers.

Printed in U.S.A. by Modern Litho-Print Company in Jefferson City, Missouri.

For AIPG news and activities go to www.aipg.org.